



Technical data

PLASTIC-TUBES

Extruded
in accordance with **DIN EN 13045**

Material

- PE-HD (high density polyethylene)
- PE-LD (low density polyethylene)
- PE-LLD (linear low density PE)
- material mixes

Manufacturing process

- The tube shoulder is welded onto seamlessly extruded tube bodies

Special design

- Coex tubes with specific barrier properties, particular haptics and visual effects
- Highly transparent tubes
- Tubes with UV-protection of filling product
- Tamper-evident seal out of aluminium or plastic
- Push-on version

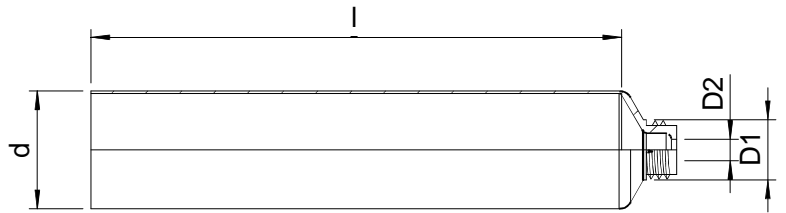
Decoration

- Shoulder and tube body transparent, white or colored
- Printing by means of rotary offset printing with up to 7 colors
- Additional coloring by means of grid pattern and iris printing
- Silk-screen printing with up to 7 colors
- Gold, silver and color hot foil stamping
- Protection of the print image and increase of the diffusion stability of the tube body by means of transparent, matt or shiny finishing varnish
- Hybrid printing inline (combination of flexo and silk-screen printing)
- Labeling

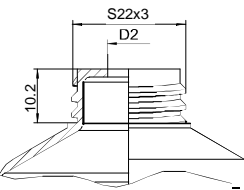
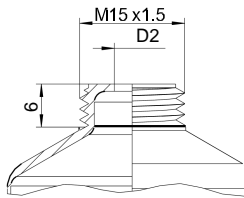
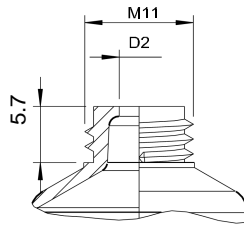
Caps

- Screw caps
- Flip-top caps screwed or pushed on and orientated to the print image
- Sleeved caps
- Tamper-evident caps with tear-off ring
- Bicolor caps

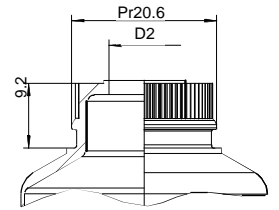
www.tubex.de



Thread version

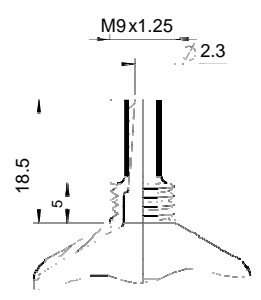
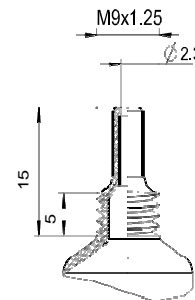
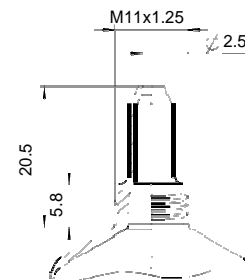
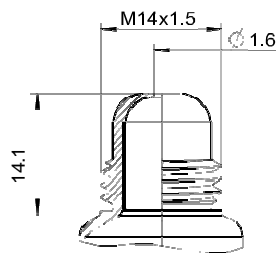


Push-on version

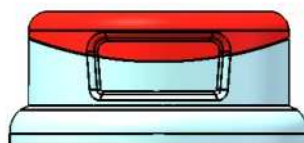


Nominal diameter	Max. length	Thread version	Push-on version	Orifice
d	l	D ₁	D ₁	D ₂
19	120	M11	-	1.5-3.5
22	150	M11	-	1.5-3.5
25	160	M11	-	1.5-3.5
30	180	M15	-	1.1-9.5
35	190	M15	-	1.1-9.5
35	190	-	Pr20.6	10
40	190	M15	-	1.0-9.5
40	190	-	Pr20.6	10
50	215	S 22 x 3	-	1.9-13.9
50	215	-	Pr20.6	10

Special tube heads



Nominal diameter	Thread	Type	Height	Orifice
d	D ₁			D ₂
19	M9	elongated nozzle	15	2.3
19	M14	ball-shaped head	14.1	1.6
30	M9	elongated nozzle	18.5	2.3
30	M11	elongated nozzle	20.5	2.5



SL-T Shoulderless Tube

All information can be found via WWW.SL-T.de



Technical data

**Filling volume
for PLASTIC
TUBES**

Tubex Wasungen GmbH
Aluminiumstraße 1
D-98634 Wasungen
Tel.: 0049-36941/75-0

Volume	Ø19	Ø 22	Ø 25	Ø 30	Ø 35	Ø 40	Ø 50	SL-T Ø 50
10 ml	60							
15 ml	80	65						
20 ml	100	80	70					
25 ml		95	80					
30 ml		110	95	80				
40 ml			115	95				
50 ml				110	90			
60 ml				125	100			
75 ml				140	115	105		
80 ml					125	110		
100 ml					150	125	110	
125 ml					175	145	115	110
150 ml						165	130	125
200 ml							160	150
250 ml							185	175
275 ml							200	
300 ml							215	
Min. Length	60	60	70	80	80	80	100	110
Max. Length	120	150	160	180	190	190	215	185

Areas with white background represent the recommended tube length.

www.tubex.de